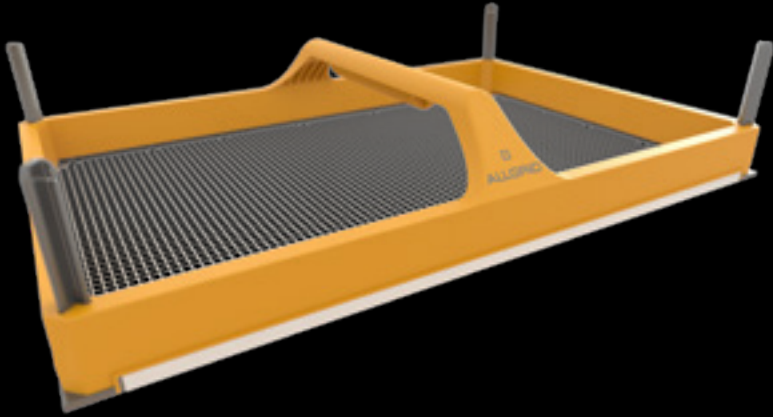


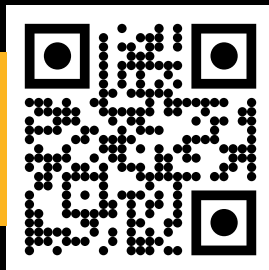
# ALLGRID

## TILE 100



## INSTRUCTIONS FOR USE

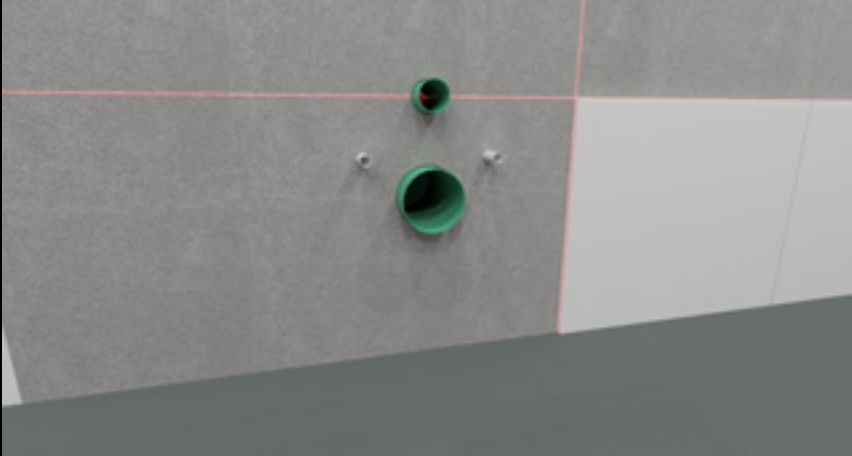
Read more or watch  
video instructions



**1**

Mount the adjustable feet in each of the corners of the measuring frame. Note that the legs are supplied with different joint widths (0mm, 1.5mm).

---

**2**

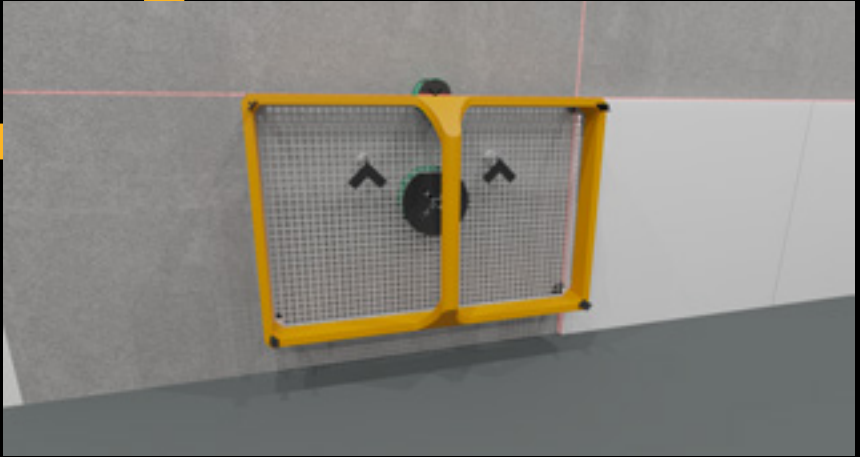
Place the measuring frame (Tile 100) over relevant measuring points. For protruding pipes etc., adjust the feet in relation to the distance from the wall.

---

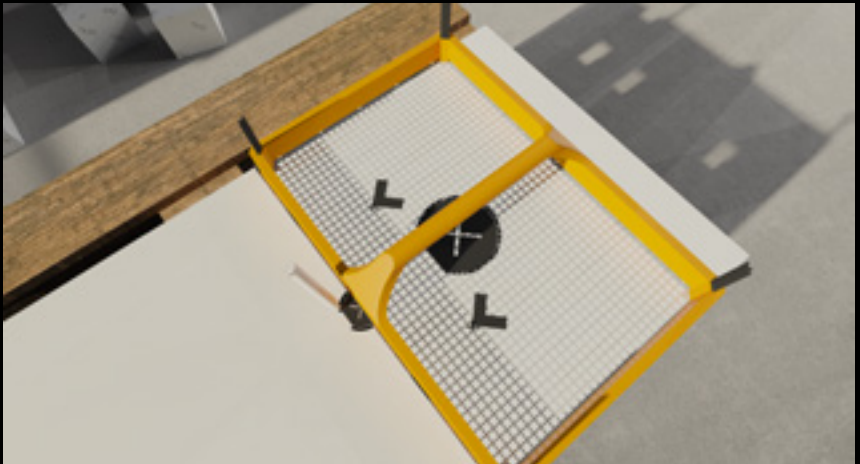
**3**

It is often smart to use lasers in the room as reference lines. Alternatively, you can measure the reference point from the ceiling/floor/wall/studs with a tape measure. Reference measurements are marked on the edge of the measuring frame using the supplied whiteboard marker. When tiling, the joints are marked as reference measurements in the same way.



**4**

Place magnetic shapes exactly over the measurement points.

**5**

Carry the measuring frame to the tile or building board to be installed. Transfer the measurement points accurately using the supplied marker.

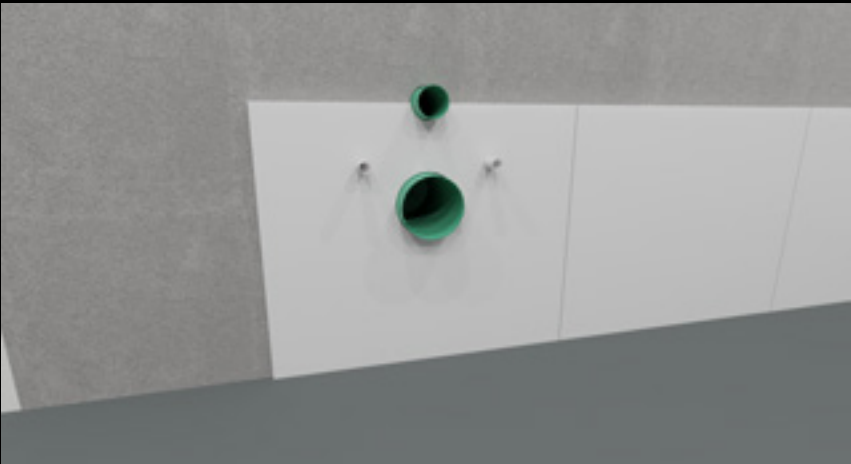
6



Cut out according to the marks on the tile/building board.

---

7



Mount the tile/building board on the wall.

**Good luck with an efficient  
and stress-free working day!**